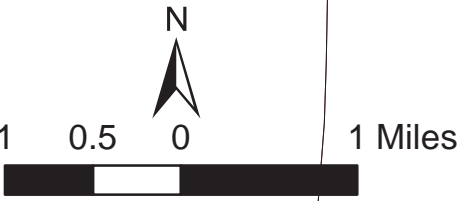


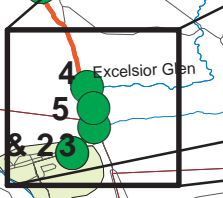
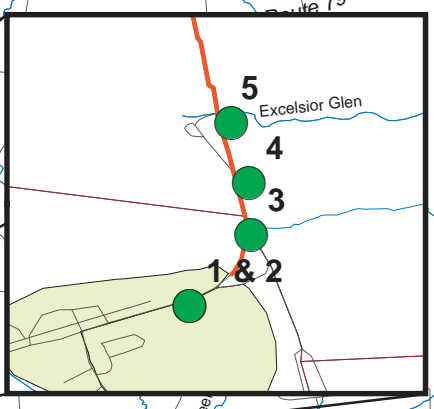
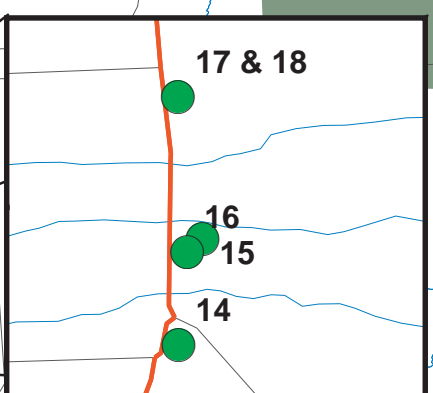
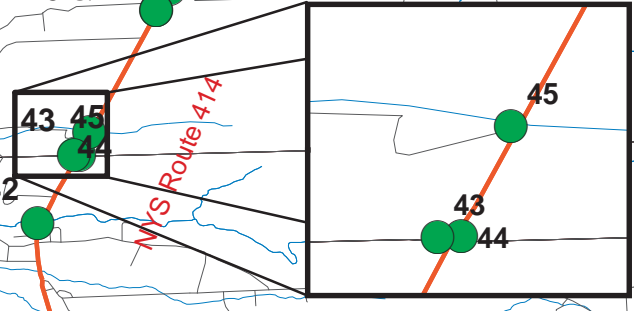
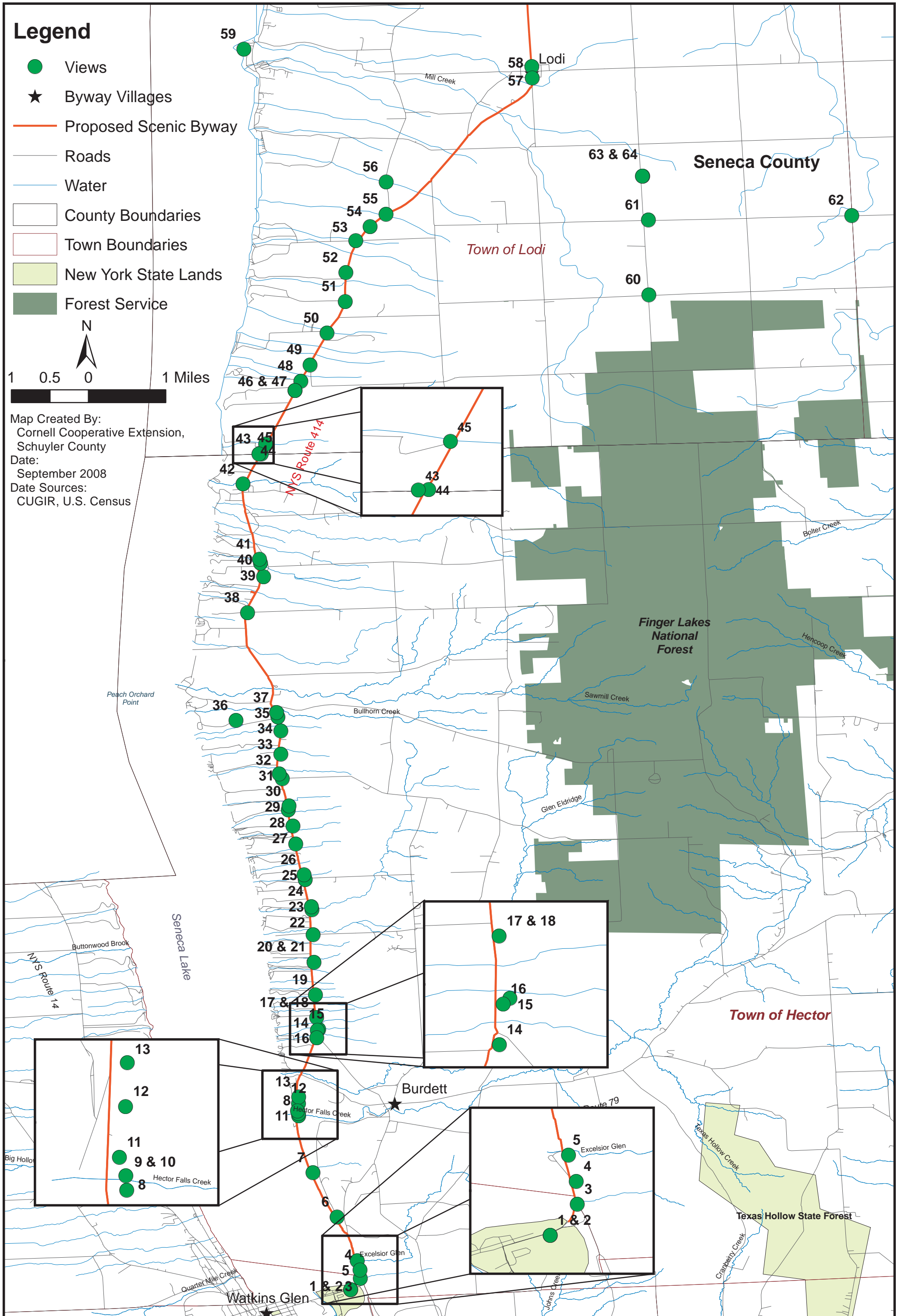
Proposed Seneca Lake Scenic Byway

Legend

- Views
- ★ Byway Villages
- Proposed Scenic Byway
- Roads
- Water
- County Boundaries
- Town Boundaries
- New York State Lands
- Forest Service



Map Created By:
Cornell Cooperative Extension,
Schuyler County
Date:
September 2008
Date Sources:
CUGIR, U.S. Census



Seneca Lake Scenic Byway – Views Key

Map #	Location	View type	Notes
1	Watkins Glen - Clute Park looking north	Vista- Lake view framed by trees.	Open vista in Winter.
2	East end of Clute park, on Rt. 414/79	Panorama in winter, viewshed when foliage is out.	
3	Tank Beach	Viewshed	Views of both salt plants. Currently an un-official pull-off, it is a possible location for signage and a kiosk.
4	Heading North on Rt. 414/79, past Cargill property.	Road Conformity	Short view to the North as the road rises out of the valley on the eastern slopes of the lake, towards Burdett.
5	Rt. 414/79, looking south, past lake houses.	Valley View	Contained view of the Marsh and surrounding slopes
6	Past Rt. 79 turn-off, and Middle Road. Looking north.	Leaf tunnel when foliage is present.	Some road conformity aspects as well. Steep cliffs to west down to the lake, but trees and scrub screen a direct view of the lake.
7	Several locations to the west of 414, in same area as #6.	Obstructed Views	Potential for expansion into turn-off sites heading south.
8	At Hector Falls, looking west	Viewshed	More pull-off potential.
9	At Hector Falls	Tunnel Effect view of Falls to the East	Falls are the opening to a "hanging gorge."
10	At Hector Falls	Overlook	View firm west side, heading south, down into the falls and gorge as it enters the lake. Difficult view to access.
11	North past Hector Falls, looking south.	Tunnel effect	Must be viewed from the north, heading south.
12	House complex north of the Falls	Built form	Does not farm view, but construction & materials are consistent with the area.
13	North past Hector Falls, from just south of the intersection with North Falls Road	Tunnel view w/vistas components	View of Cargill Salt Plant
14	South of intersection with Tug Hollow Road	Contained/ Vista	View is to the south, from the west lane of Rt. 414.
15	North of intersection with Tug Hollow Road	Agricultural/Built Form	Fruit house / stand with vineyards to the east of Rt. 79
16	North of #15, on the west side of the highway, looking south	Vista	View of Watkins Glen, foliage & hill slopes. Also shows southern hills & landforms.
17	South of Phelps Road, looking east	Contained	View of vines in foreground, and the ridge that defines FLNF boundaries.
18	North of Phelps Road, past #17	Contained	Ridge view, similar to #17.
19	North of Giles Road, South of Vickery	Obstructed View	Typical obstructed view of lake, partially contained by scrub/brush.
20	Seneca Springs Vineyard	Contained View / Incompatible Built Form	Vineyards with ridge in the distance (to the east of Rt. 414, as heading north), with unfortunate winery building.
21	Seneca Springs Winery. Looking West	Contained View	Views of Lake, western shore, & forest, contained by vegetation.
22	Mann Road, looking west.	Contained View	Agricultural setting w. house in foreground, lake and west shore in the distance.

23	Ely Farm, looking west	Contained View w/ Vista	Potential for a pull-off on the west side. View of orchards and descending slope in the foreground m lake and west shore in the distance. Distinctive geography and agricultural use.
24	Immediately past Ely Farm	Contained View	Perpendicular to Rt. 414, looking east, a small gorge & waterfall. Sheltered.
25	Past Ely Farm, before Shumway Road, looking west.	Panorama	View across abandoned orchards, cliffs on west shore are visible.
26	Past Shumway Road, looking west	Obstructed View	View of the lake obstructed by brush.
27	Rose Lane	Contained View	View down lane as you look west.
28	Nichols Road	Panoramic/ Viewshed	
29	Immediately north of Sunset Shores Rd., looking north.	Overlook - Vineyard, lake	Contained view to the south, tree-line runs along the south side of the access road. Existing pull-off in this location, although informal. Mike Schamel owner?
30	North of site 29, looking west	Obstructed views	Buildings close to the road, views obstructed.
31	At intersection of Matthews Road	Contained views	Views contained/obstructed by buildings. View off slope, vineyards, lake, and far shore (Glenora Point).
32	Intersection of 414 and Club Seneca Rd.	Contained View, existing pull-off	Excellent pull-off location, just north of Matthews Rd., on west side of rd.
33	FLNF Ranger Station parking lot	Obstructed view	View obstructed by power lines. Parking lot is nice.
34	Stonecat Café parking lot	Viewshed	Shallow, long view of the lake and opposite shore.
35	Head of Smith-Bond Park Road	Panoramic view, but with north tree-line cutting in.	Potential pull-off location?
36	West on Smith-Bond Park Road	Tunnel/contained view, road conformity	Down slope from 414, but on a public road. Pull-off & kiosk just into the park property?
37	South of Co. Rte 2	Contained view	looking east, contained view of small gorge and waterfalls
38	At intersection of Hazlitt & Rt. 414	Upland panoramic view	looking east, view of vineyards & ridge
39	At intersection of Fausold & 414	Road conformity & panoramic view	Road conformity to north and east, panoramic view of lake to the north and west.
40	South of Spirawks Lane	Road conformity	looking north along Rt. 414
41	Between Spirawks & Williams Road	Confined vista	Lake, vineyards & hills looking northwest
42	In Valois, north of Lake St, intersection	Road conformity	Looking north, up and over bridge, past graveyard to the east.
43	South of Seneca Road, at intersection of Confer & Rt. 414	Confined view/vista	Looking south west, views of lake and far hills, with vineyard in foreground.
44	Seneca Rd Finger Lakes national Forest	Looking west toward lake leaf tunnel effect	
45	Standing Stone Vineyards	Panorama view	A working winery
46	Rte.414in Caytwood	Obstructed view west	Site of Queen's Castle. Meeting place for women's rights movement.
47	Dano's Restaurant	Contained view	
48	Shalestone Winery	Upland panoramic view	

49	Rte. 137 & 414	West panorama view	
50	The Fox and the Grapes	View to the so. West obstructed	Bed and breakfast
51	Ginny Lee Café on Rt. 414	Panorama view	Looking at International Salt on west side of lake
52	Lamoreaux Vineyards on Rte. 414	Panorama view	Winter in the finger lakes
53	Overlook at Rhodes Rd. looking north	Over look	Widest point of lake. Also state parking area
54	Kings Garden Vineyards	Upland panoramic view	
55	Susanne's Rest.	Upland panoramic view	
56	Mulfords peach orchard	Panorama view	One of the surviving orchards
57	Lodi historical building on Rt. 414	Contained view	Use for community functions
58	Lodi museum ON Rte. 414	Contained view	Lodi museum
59	Lodi Point state park	Contained view into park	Recreation and state marina
60	Parmenter Rd. & Keady Rd.	Looking no. West panorama view	Highest point in Seneca County
61	Dean Rd.	Panorama view	Site of the picking in the pasture blue grass feasible
62	The Townsend Farm	Panorama view	A large working farm
63	AN Amish school	Contained view	Education in Lodi Amish community
64	Van Vleet farm on rte 414	Panorama view	Sheep grazing